

Carlos Muñoz Luque



CarlosMluqueSTUDIO

[www.carlosmunozluque.com](http://www.carlosmunozluque.com)



Geologica 2017. 1,60 x 1,30 x 0,12 m. Mix media: Waxed Canvas, resin, pigments.





Geologica 2017. 1,60 x1,30 x 0,12 m. Mix media: Waxed Canvas, resin, pigments. Detail 1-2.





Geologica 2017. 1,30 x 1,00 x 0,12 m. Mix media: Waxed Canvas, resin, pigments.





Geologica 2017. 1,30 x 1,30 x 0,12 m. Mix media: Waxed Canvas, resin, pigments.





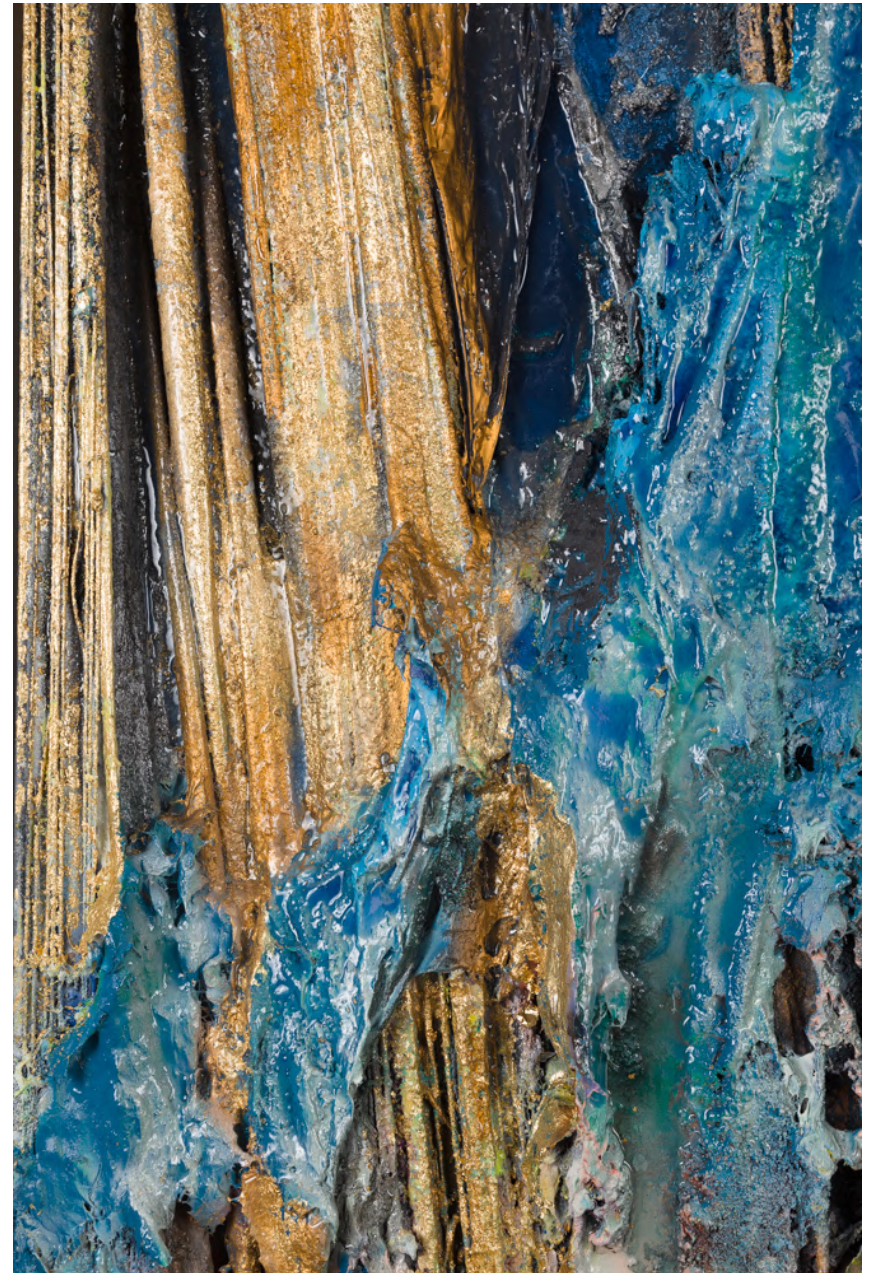
Lignum Vitae 2019. 1,60 x 1,30 x 0,12 m. Mix media: Waxed Canvas, resin, pigments.





Lignum Vitae 2019. 1,60 x1,30 x 0,12 m. Mix media: Waxed Canvas, resin, pigments.





Lignum. Baroque study, 2019. 1,60 x1,30 x 0,12 m. Mix media: Waxed Canvas, resin, pigments.





Hominum Lignum 2019. 1,90 x 1,80 x 0,12 m. Mix media: Waxed Canvas, resin, gypsum, pigments.





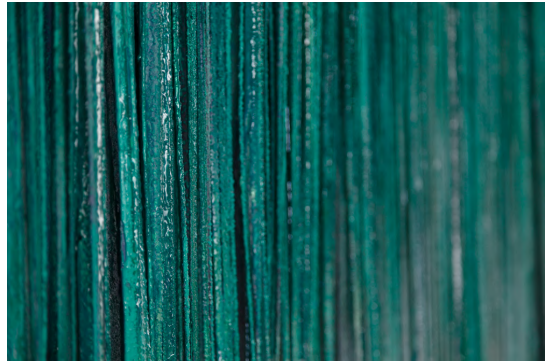
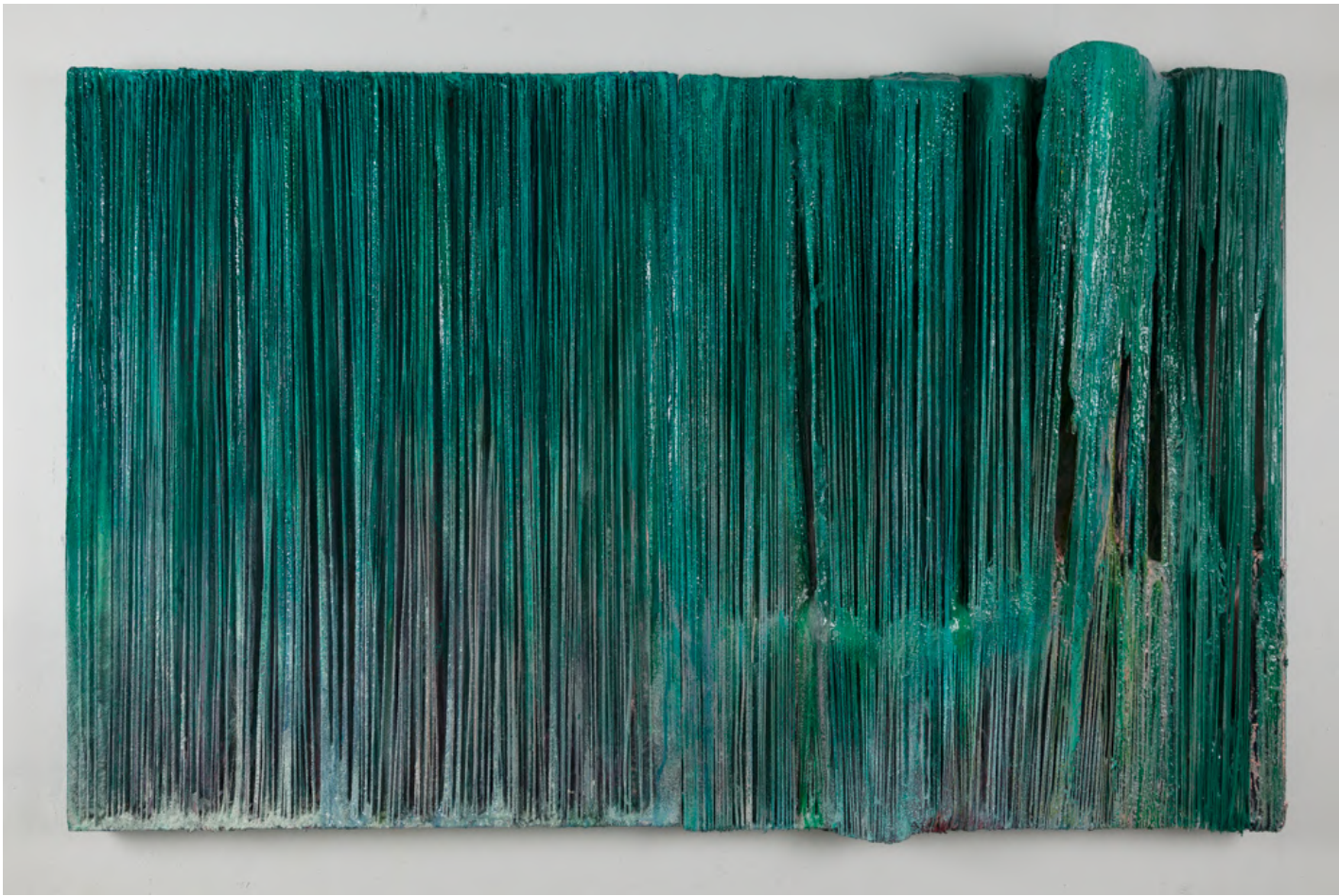
Hominum Lignum 2019. 1,90 x 1,80 x 0,12 m. Mix media: Waxed Canvas, resin, gypsum, pigments. Detail.





Ad Vitam 2019. 2m diameter . Mix media: Waxed Canvas, resin, pigments. Detail 1-2.





Motion Lignum 2020. 2,60 x1,60x 0,12 m. Mix media: Waxed Canvas, cotton rope, resin, pigments.

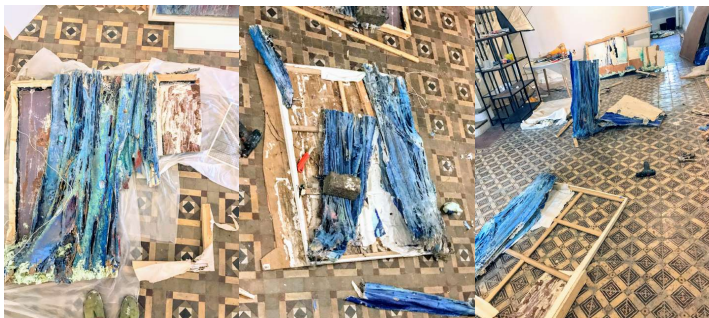




Exhibitions. 2017-2018-2020. Singapore Studio.

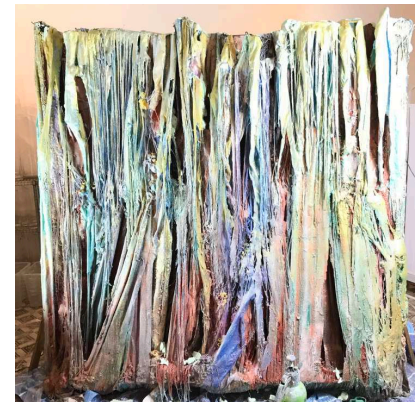
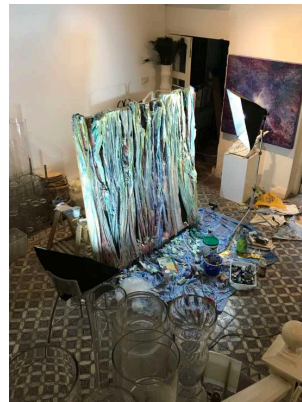


" I don't paint, I don't sculpt.. I am just like the rain, the wind and the sun.. destroying and creating, moving and transforming matter.."



"With the end of my breath, which is the beginning of yours"  
Andre Breton. Nadja.

Carlos M. Lugo

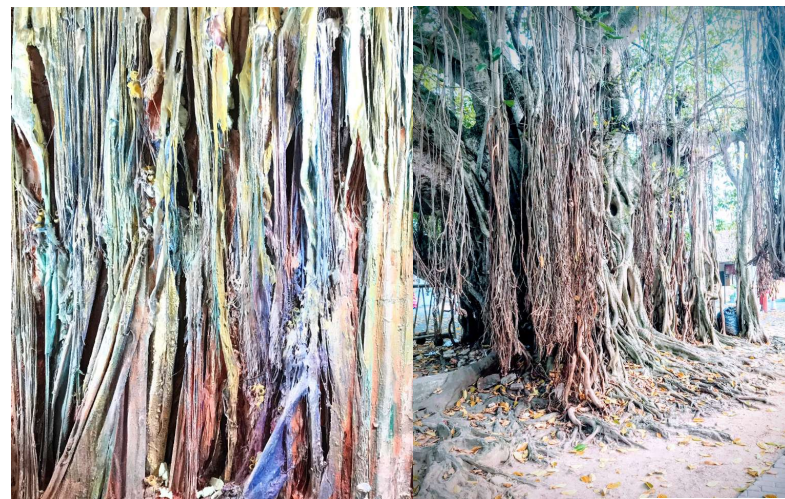


Carlos M. Lugo

Try and failure, creation and destruction, affirmation and negation. Never warranty of success. All the creation process gets encapsulated in the artwork...it is its Soul.."



Carlos M. Lugo



Carlos M. Lugo